

TITAN PROPS



DUE TO ITS LIGHTWEIGHT MATERIAL, OUR TITAN PROPS CAN HOLD EIGHT TIMES THE LOAD FOR THE SAME WEIGHT AS ITS STEEL COUNTERPART.

This extruded aluminium prop can easily be handled in awkward locations and is ideally suited for tight and difficult-to-access applications. They have a phenomenal 10t working load limit, and are made of high-grade light alloy for easy handling.

TITAN PROPS



TITAN PROPS (ALUMINIUM) WORKING LOAD LIMIT

Titan Props	Description Size			
	No.2	No.3	No.4	No.6
Range	1.7–2.9m	2.4m - 3.6m	2.9–4.1m	4.3–5.5m
Weight	17kg	19kg	21kg	28kg

TITAN PROP WLL – FORMWORK

Extensions (m)	No.2 (kN)	No.4 (kN)	No.6 (kN)
1.70	100.0		
1.90	100.0		
2.10	100.0		
2.30	100.0		
2.50	88.0		
2.70	57.0	(kN)	
2.90	42.0	94.9	
3.10		79.9	
3.30		70.0	
3.50		62.4	
3.70		55.0	
3.90		50.0	
4.10		41.0	(kN)
4.30			42.0
4.50			39.0
4.70			37.1
4.90			33.0
5.10			31.0
5.30			28.0
5.50			27.0

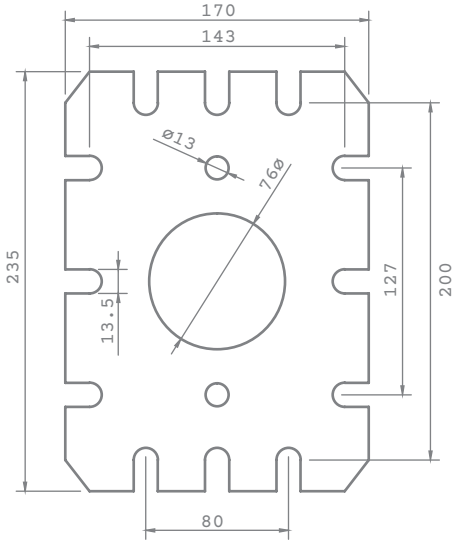
TITAN PROP WLL – BACKPROPPING

Extensions (m)	No.2 (kN)	No.3 (kN)	No.4 (kN)	No.6 (kN)
1.70	128.0			
1.90	128.0			
2.10	128.0			
2.30	128.0	(kN)		
2.50	115.7	128.0		
2.70	106.0	128.0	(kN)	
2.90	89.1	128.0	128.0	
3.10		128.0	128.0	
3.30		120.3	126.6	
3.50		96.0	108.1	
3.70			84.9	
3.90			72.5	
4.10			60.5	(kN)
4.30				89.3
4.50				80.5
4.70				71.6
4.90				64.4
5.10				57.1
5.30				49.5
5.50				41.9

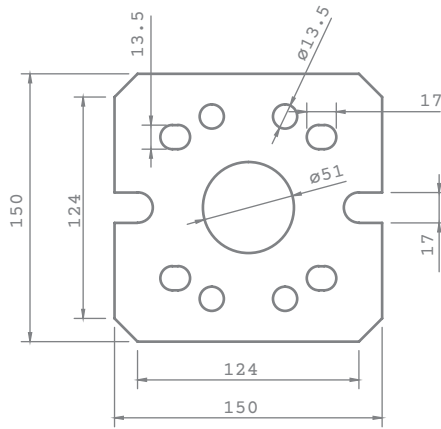
Note: Specifications are approximate.

TITAN PROPS

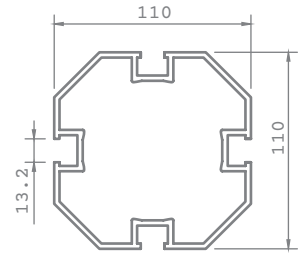
THE MOST VERSATILE ALUMINIUM PROP AVAILABLE CAN ALSO BE JOINED AND USED IN COMBINATION FOR LONGER LENGTHS.



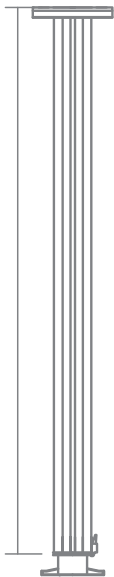
Headplate Detail



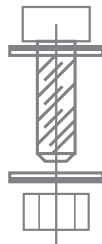
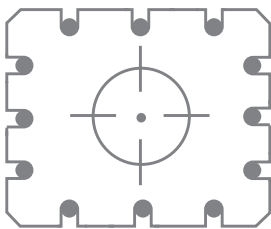
Baseplate Detail



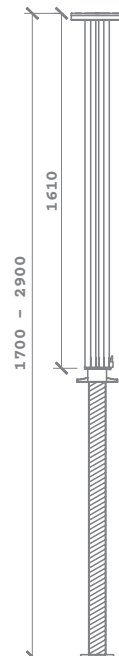
Section Detail



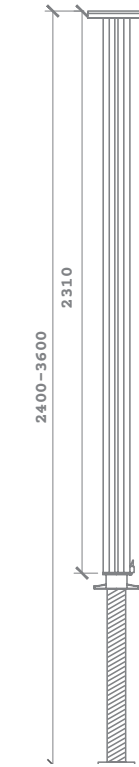
Extension Sections
Available
0.5m - (4.3kg)
1.0m - (5.7kg)



*Titan Props can be connected vertically to each other using the Titan Leg Connecting Bracket.



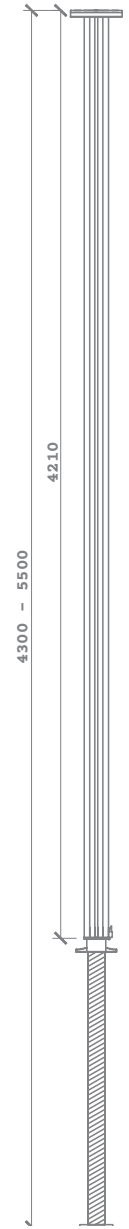
Titan No. 2



Titan No. 3

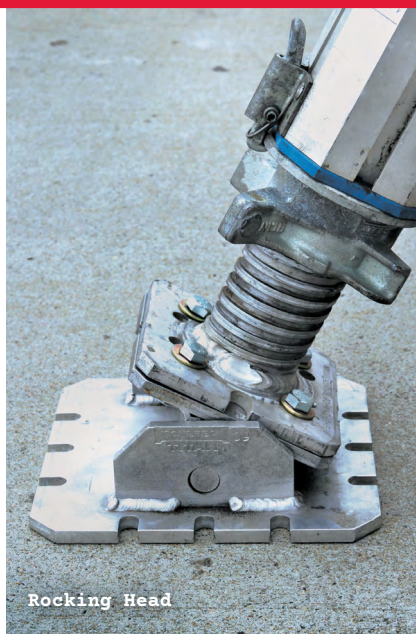


Titan No. 4



Titan No. 6

TITAN PROPS – ACCESSORIES



TITAN FRAME SPECIFICATIONS

Height	Closed	Open	Increment Extension
504mm	900mm	1500mm	300mm

TITAN BEAM CLAMP SPECIFICATIONS

Weight	Closed	Open
1.6kg	5mm	70mm



What we do
Lasers
Pipe Plugging
Shoring
Confined Space
Traffic
Propping
Jack & Lifting
Sales
Information