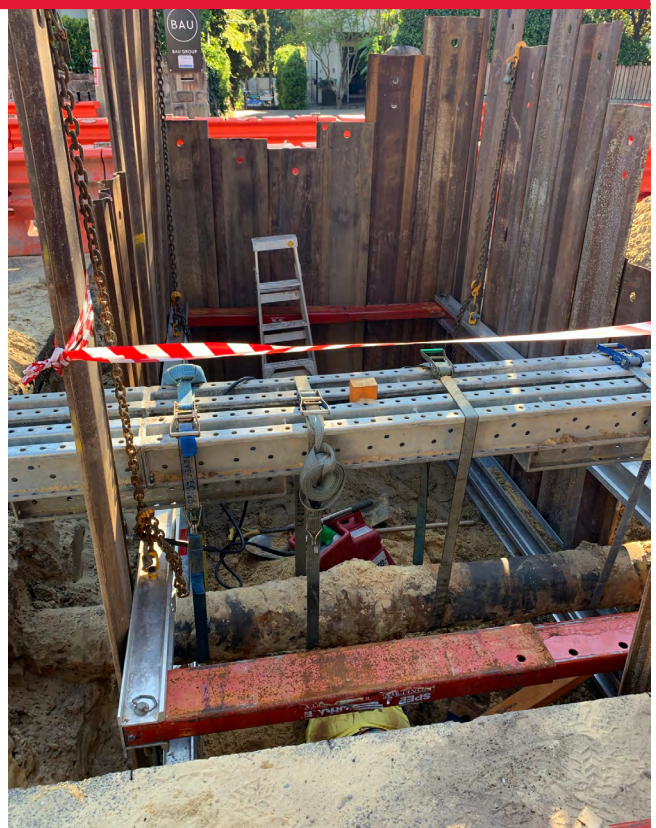


ALUMINIUM WALER SYSTEMS



ALUMINIUM WALER SYSTEM

Shore Hire’s Aluminium Waler System is ideally suited for the job when excavating soils requiring close or intermittent timber runners or trench sheeting.

Compared to Trench Jacks and Timber Walers, Aluminium Walers cover a wide range of various site-specific shoring requirements, while maximising workspace within the open trench.

Aluminium Walers can be braced to provide a two- or four-sided excavation when used with our Mechanical & Hydraulic Speed Struts, Timber Runners, or Trench Sheets.

Hanging chains can be used with Trench Sheets or Timber Runners, and Hydraulic Speed Struts can also support these at each end.

ALUMINIUM WALER AND HYDRAULIC STRUT SPECIFICATIONS

Length	Width – Internal Waler to Waler With SS950 Struts	Width – Internal Waler to Waler With SS1450 Struts	Width – Internal Waler to Waler With SS2300 Struts	Width – Internal Waler to Waler With SS3540 Struts	Clearance Between Struts
2.4m	400–710mm	710–1210mm	1160–2060mm	2380mm–3300mm	2050mm
3.6m	400–710mm	710–1210mm	1160–2060mm	2380mm–3300mm	3270mm

Note: Specifications are approximate.